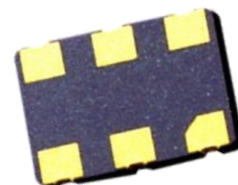


SMD VCXO 7.0x5.0mm 6 pad 3.3 - 5.0 VDC MHz

SERIES "SX0"

FEATURES

- + High reliability for low cost
- + Frequency stability to ± 20 ppm
- + Available in 5.0 and 3.3 Volt
- + Extended temperature range -40°C to $+85^{\circ}\text{C}$
- + Applications: fibre channel, telecom, set-top box, broadband, etc.



PB FREE / ROHS-2 2011/65/EU COMPLIANT

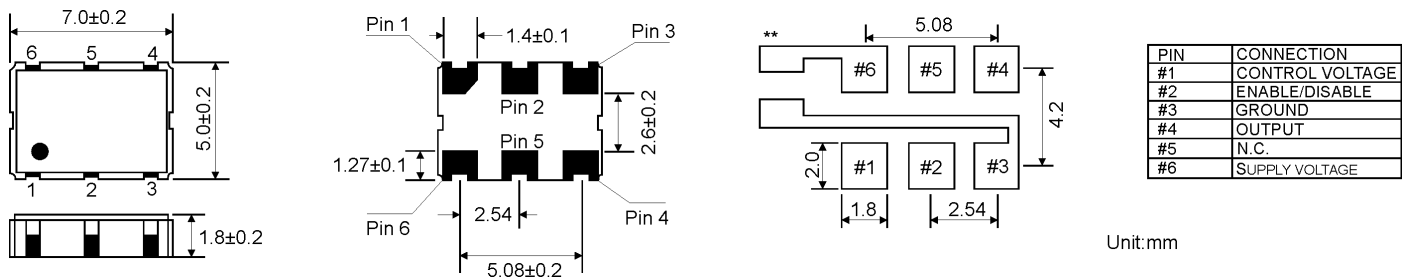
GENERAL DATA

PARAMETERS		PRODUCT FEATURES AND CONDITIONS	
SMD-OSCILLATOR SERIES		SMD-VCXO6	
PACKAGE		Ceramic package 7.0 x 5.0 x 1.8 mm ³	
FREQUENCY RANGE		1.0 ~ 170.0 MHz	
FREQUENCY STABILITY		± 20 ppm / ± 25 ppm / ± 50 ppm	
OPERATING TEMPERATURE RANGE		$-10/+70^{\circ}\text{C}$ ~ $-40/+85^{\circ}\text{C}$	
STORAGE TEMPERATURE RANGE		$-55/+125^{\circ}\text{C}$	
INPUT	VOLTAGE		$+3.3\text{VDC} \pm 5\%$ / $+5.0\text{VDC} \pm 5\%$
	CURRENT		30 mA max.
OUTPUT	SYMMETRY	STANDARD	40/60%
		OPTION	45/55%
	SIGNAL		CMOS
	RISE AND FALL TIME		5 ns max.
	"0" LEVEL	CMOS/HCMOS	10% VDD max.
	"1" LEVEL		90% VDD min.
LOAD		15 pF ~ 30 pF	
START-UP TIME		10 mS max.	
INPUT IMPEDANCE		10 k Ω min.	
MODULATION BANDWIDTH (BW)		5 kHz min.	
CONTROL VOLTAGE RANGE		1.65VDC $\pm 1.35\text{VDC}$ for +3.3VDC / 2.5VDC $\pm 2.0\text{VDC}$ for +5.0VDC	
CENTER VOLTAGE		1.65VDC for +3.3VDC / 2.5VDC for +5.0VDC	
PULLING RANGE		± 50 ppm ~ ± 100 ppm min.	
LINEARITY		10% max.	
SLOPE		POSITIVE	
PHASE NOISE		-70dBc/Hz @10Hz	
		-130dBc/Hz @10kHz	
PIN CONNECTION	PIN 1	CONTROL VOLTAGE	
	PIN 2	ENABLE/DISABLE FUNCTION	
	PIN 3	GROUND	
	PIN 4	OUTPUT	
	PIN 5	NOT CONNECT	
	PIN 6	SUPPLY VOLTAGE	
	OPTION	OTHER PIN CONNECTIONS AVAILABLE ON REQUEST	

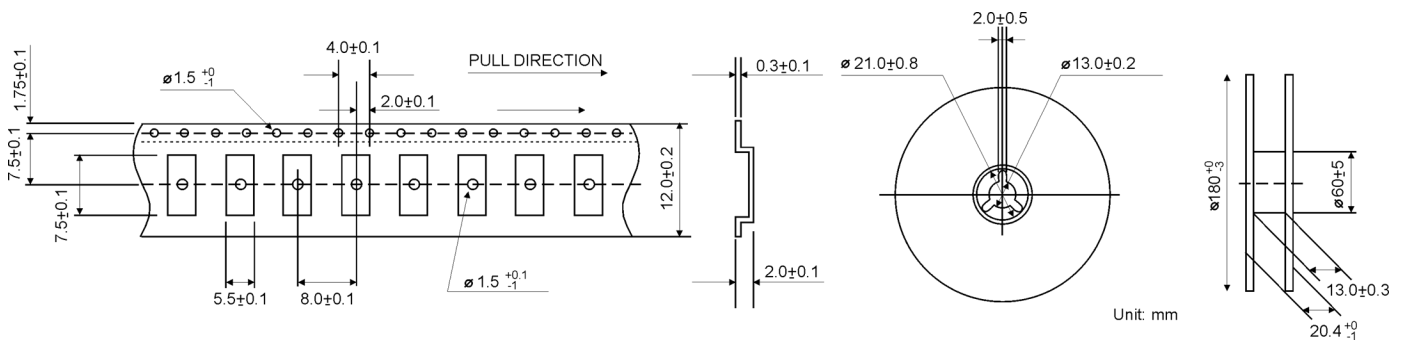
GENERAL DATA (CONTINUED)

PARAMETERS		PRODUCT FEATURES AND CONDITIONS	
ENABLE / DISABLE FUNCTION		PIN 2 ENABLE/DISABLE	PIN 4 OUTPUT
		>0.7 VDD MIN. OR OPEN	OSCILLATION
		<0.3VDD MAX.	DISABLE
DELIVERY FORM		Tape and Reel / 1.000 pcs. per reel, other quantities are available on request	
OTHER PARAMETERS ARE AVAILABLE ON REQUEST / CREATE HERE YOUR SPECIFICATION			

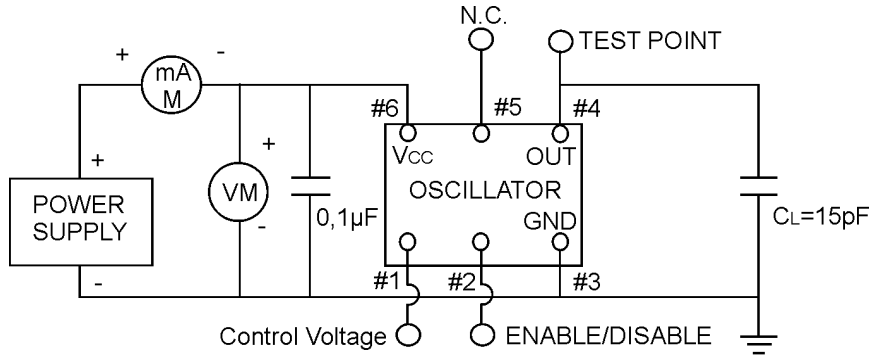
OUTLINE DRAWING



REEL SPECIFICATION



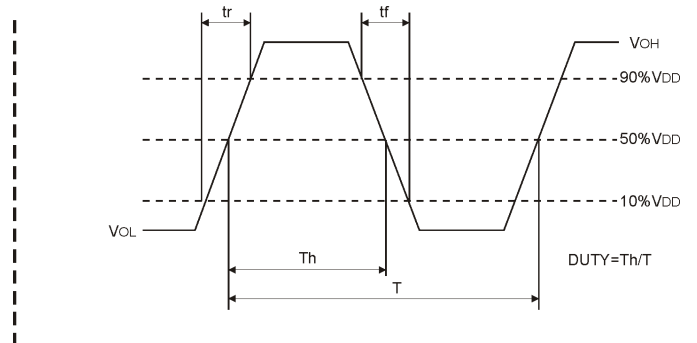
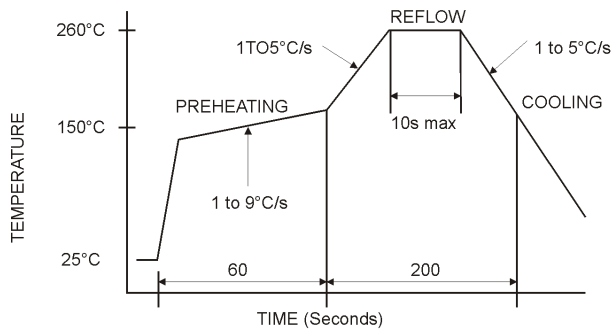
TEST CIRCUIT FOR CMOS



NOTE: CL includes probe and fixture capacitance

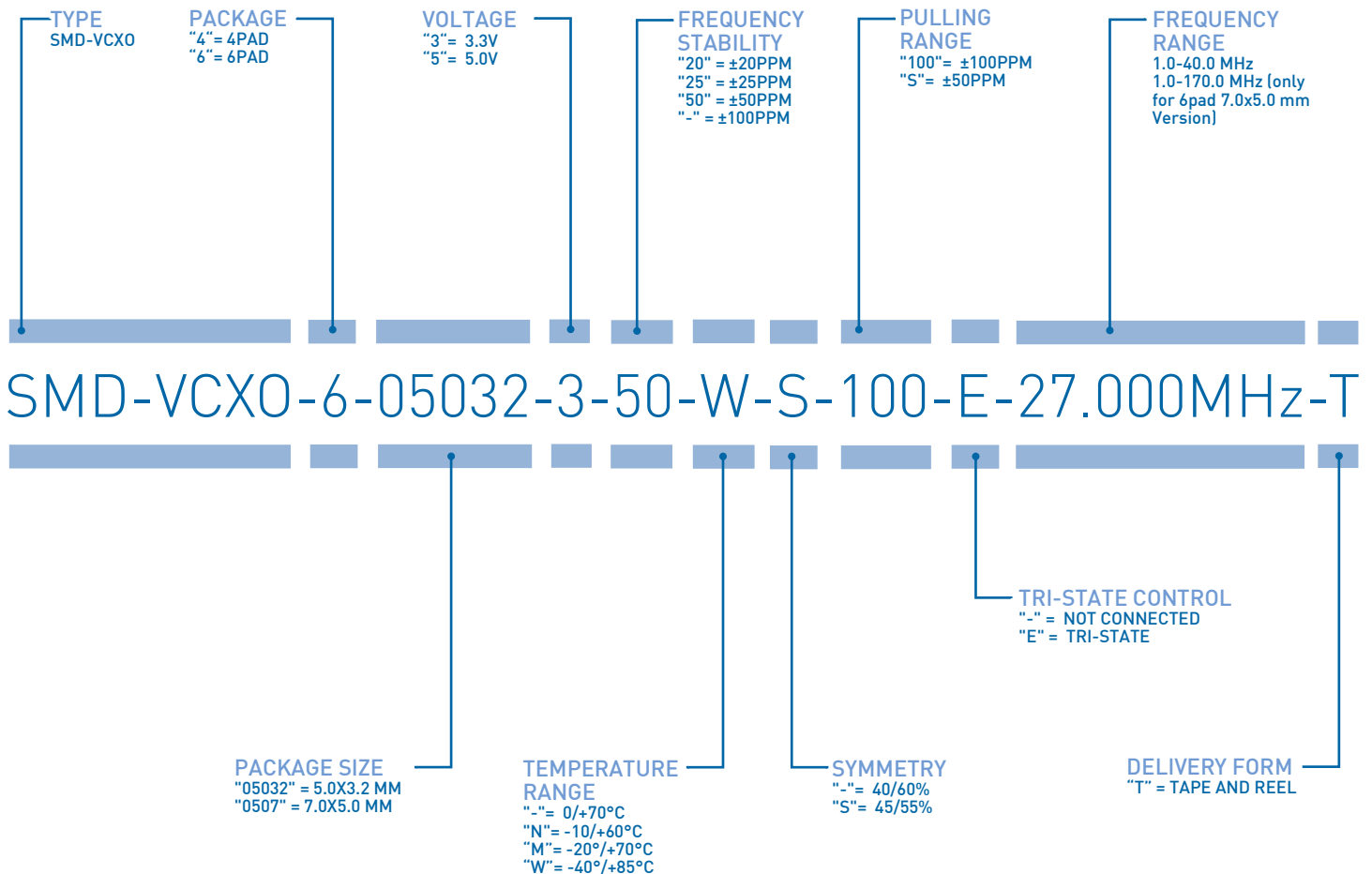
REFLOW SOLDER PROFILE

CMOS LOAD





ORDERING INFORMATION



EXAMPLE: SMD-VCXO-6-05032-3-50-W-S-100-E-27.000MHZ-T

PLEASE INDICATE YOUR REQUIRED PARAMETERS



PREMIUM QUALITY BY PETERMANN-TECHNIK



OUR COMPANY IS CERTIFIED ACCORDING TO ISO 9001:2015 IN OCTOBER 2016 BY THE DMSZ CERTIFIKATION GMBH.

THIS IS FOR YOU TO ENSURE THAT THE PRINCIPLES OF QUALITY MANAGEMENT ARE FULLY IMPLEMENTED IN OUR QUALITY MANAGEMENT SYSTEM AND QUALITY CONTROL METHODS ALSO DOMINATE OUR QUALITY STANDARDS.